



SCIENCE CENTRE

Location: Maganjo, Opp. Pr Deo's church
For; Science lessons, text books, stationery etc..
Contact: 0701467746/0787119579 E-
mail: atomsiencecentre@gmail.com

END OF JULY TEST EXAMS 2021

S.3 BIOLOGY

1HRS: 30MINUTES

TOPIC: NUTRITION

1. (a) Define the following terms as applied in nutrition.
 - (i) Hetetrophism
.....
.....
 - (ii) Mutualism
.....
.....
 - (iii) Parasitism
.....
.....
- (b) Briefly comment on the mode of feeding in each of the following organisms.
 - (i) Tape worm
.....
.....
 - (ii) Bread mould
.....
.....
 - (iii)Mango plant
.....
.....
 - (iv)Goat
.....
.....
- (c) How is glucose different from starch?
.....
.....
- (i) Why is starch referred to as a polysaccharide?
.....
.....

(ii) Briefly explain the laboratory test for starch based on the following Procedure

.....
.....

Observation

.....
.....

(d) (i) Write short notes about enzymes.

.....
.....
.....
.....

(ii) Outline any ten names of enzymes you know.

.....
.....
.....
.....
.....
.....
.....
.....
.....
.....

2. (a) Define the following terms as applied in digestion.

(i) Digestion

.....
.....

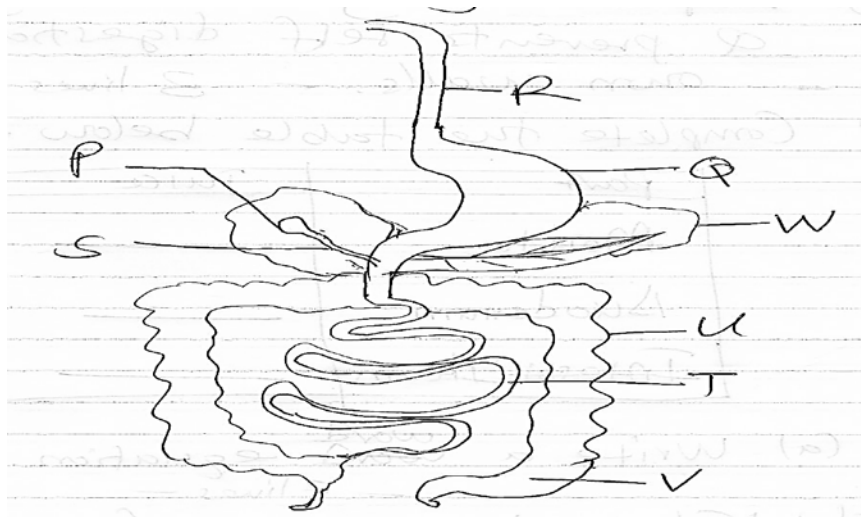
(ii) Assimilation

.....
.....

(iii) Absorption

.....
.....

(b) The figure below shows part of the alimentary canal of man.



(i) Name parts P to W

P

Q

R

S

T

U

V

W

(ii) Name the digestive juice secreted / produced in parts;

Q

W

T

(iii) In which of the parts above, does protein digestion start.

.....

(iv) Explain any two ways part Q prevents self-digestion of its own walls.

.....

.....

.....

.....

(v) Complete the table below

Part	Juice	One common enzyme
Mouth		
Duodenum		
Ileum		

3. (a) Write a word equation for photosynthesis

.....

.....

(b) (i) State the source of carbon used in making glucose by the plant.

.....

.....

(ii) Give one other main raw material for photosynthesis.

.....

.....

(c) Explain any five internal adaptations of plants to maximize rate of photosynthesis.

.....

.....

.....

.....

.....

